

UCLA-CDU
CFAR Open
House





UCLA-CDU CFAR Mission Statement

The Mission of the UCLA-CDU CFAR is to **STOP HIV** in Los Angeles County and beyond.



UCLA-CDU CFAR Vision Statement

Partnership to **STOP HIV** Together:

- Stop new infections
- Stop the need for life-long treatment
- Stop morbidity among people living with HIV
- Stop the disparate burden of HIV disease

**UCLA-CDU
CFAR
AFFILIATES**



**VA Greater
Los Angeles
Healthcare
System**

**UCLA
Center for
Health Sciences,
CFAR**

**Harbor-UCLA
Medical
Center,
LA County**

**Charles R. Drew
University of
Medicine and
Science**

What will the UCLA-CDU CFAR **DO**?

LEVERAGE

Leverage currently funded programs

AMPLIFY

Amplify impact through CFAR cores and other services (mentoring, pilot projects, and gatherings)

STRENGTHEN

Strengthen the partnership between institutions and investigators

SUPPORT

Support bidirectional sharing of the expertise at both institutions

UCLA-CDU CFAR COMPONENTS

6 CORES, 1 SWG



Core A: Administrative

Jerome A. Zack, PhD (Co-Director)
Judith S. Currier, MD (Co-Director)
LaShonda Spencer, MD (Co-Director)
Kathie G. Ferbas, PhD (Managing Director, Scientific)
Jina Lee (Managing Director, Operations)



Core D: Gene Therapy and Humanized Mouse

Scott G. Kitchen, PhD (Director)



Core B: Developmental

Risa Hoffman, MD (Co-Director)
Omolola Ogunyemi, PhD (Co-Director)



Core E: Community Engagement and Clinical Informatics

Dilara Uskup, PhD, PhD (Co-Director)
Aziza Wright, MEd (Co-Director)



Core C: Centralized Laboratory Support

Dong Sung An, MD (Director)
Jennifer Fulcher, MD (Associate Director)



Core F: Clinical Science

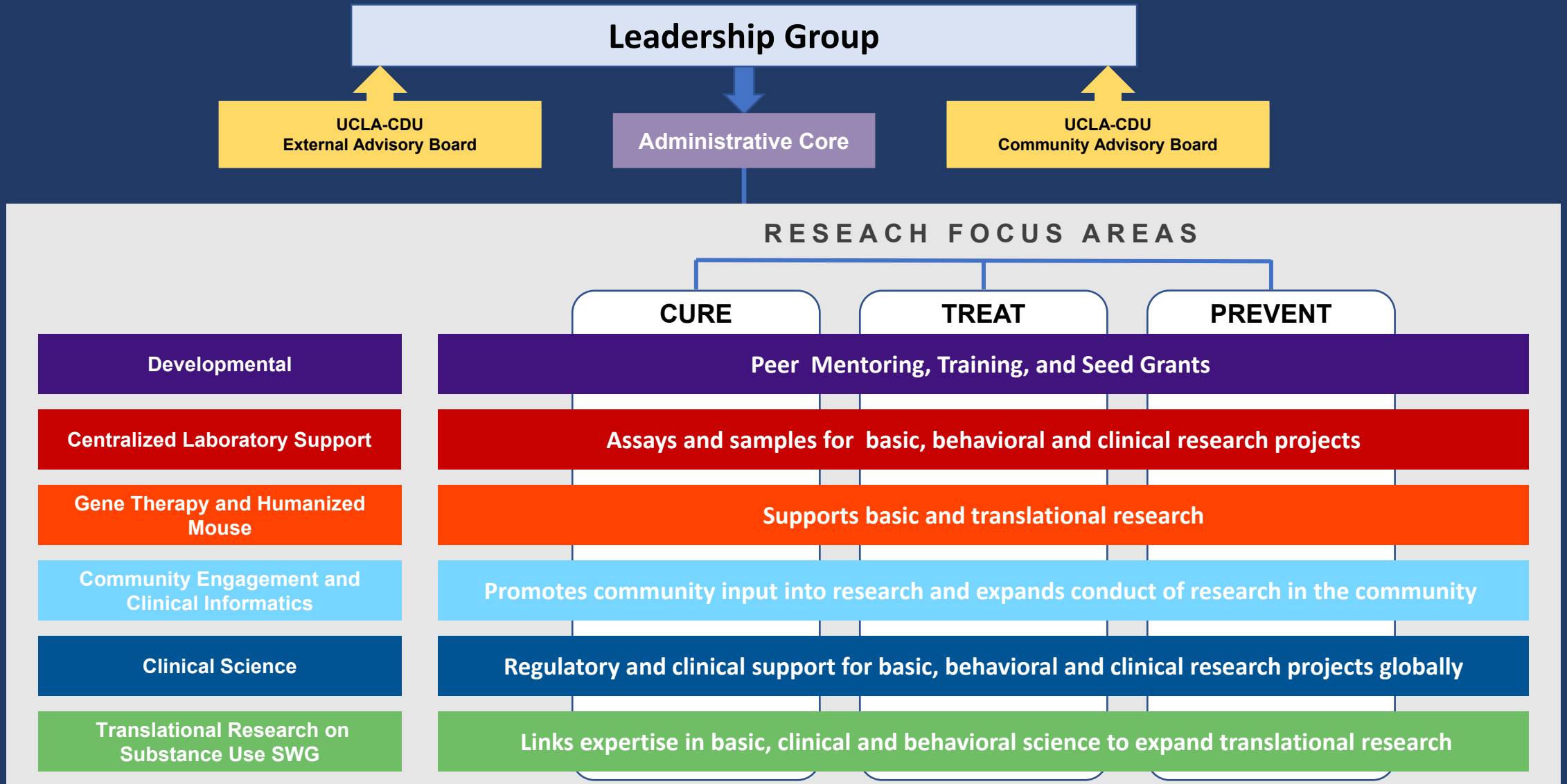
Kara Chew, MD (Director)



SWG: Translational Research on Substance Use

Pamina Gorbach, DrPh (Director)
Steve Shoptaw, PhD (Co-Director)
Gigi Simmons, PhD (Co-Director)

UCLA-CDU CFAR INTEGRATION



Community
Engagement
and Clinical
Informatics
Core



Core's purpose

The Mission of the UCLA-CDU CFAR is to

STOP HIV

Los Angeles County and beyond through
the partnership of community members
& institutions.



Core's purpose

Community members are experts in the community, community outreach, and audience for dissemination of information. Community is the key to **STOP HIV**.

CORE LEADERSHIP

- Professor Aziza Lucas-Vernado, MEd
Director, Division of Community Engagement
Co-Director, UCLA-CDU CFAR Core E
Assistant Professor, Vice-Chair
Department of Preventative & Social Medicine

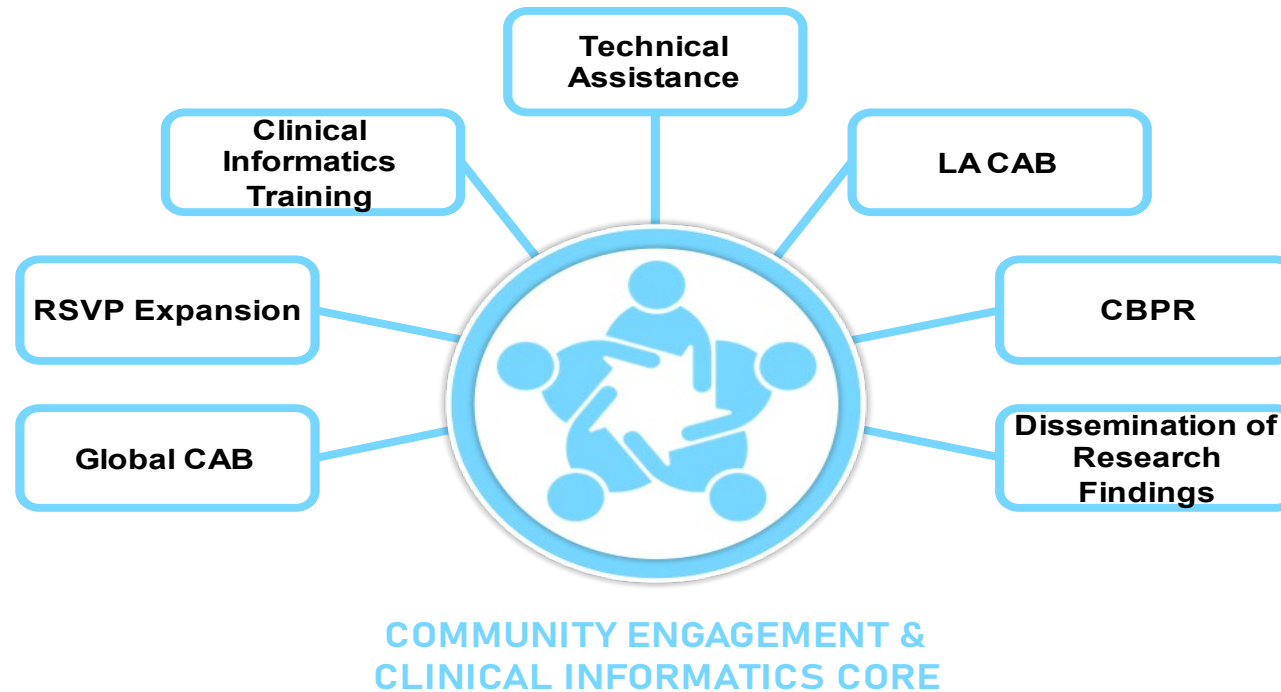


- Professor Dilara Üsküp Morgan
Co-Director, UCLA-CDU CFAR Core E
Assistant Professor, Internal Medicine



CORE COMPONENTS

Figure 3. Key Tasks of the Community Engagement & Clinical Informatics Core



CORE AIMS

AIM 1: To provide training and technical assistance (TA) in Community-Based Participatory Research (CBPR) to support productive collaborations between CFAR investigators and community partners.

- Establish quarterly “Meet and Greet” forums between CFAR investigators and community and global partners to identify mutual research interests.
- Work with the Administrative and Developmental Cores to connect Early-Stage Investigators (ESI) and underrepresented racial minoritized (URM) investigators to identify funding opportunities with community partners, thereby increasing collaborative CBPR research proposals in HIV prevention and treatment research.
- Establish an annual “HIV Community Health Research Forum” to present findings to the community and expand our network of community partners

AIM 2: To expand CBPR to populations disproportionately impacted by HIV in Los Angeles and globally through the strategic use of Community Advisory Boards (CABs) and a research registry (RSVP).

- Institute two CABs to work with the Administrative and Developmental Cores to identify new areas of need and to help shape RFAs for pilot projects to ensure they advance health equity.
- LA CAB will focus on impacted local communities ensuring that research is responsive to their interests and needs.
- Global CAB will support CFAR researchers interested in global health and inform our thinking about stopping the HIV epidemic in communities across Africa, Latin America, and the US.

CORE AIMS

AIM 2 (continued): To expand CBPR to populations disproportionately impacted by HIV in Los Angeles and globally through the strategic use of Community Advisory Boards (CABs) and a research registry (RSVP).

- Provide access to and inform diverse participants about research studies using an expanded research registry (RSVP).
- Leverage RSVP to increase the participation of under-represented populations in clinical trials.
- Maintain ongoing communication with people in the registry to disseminate information on scientific advances and to assess community priorities and concerns related to research.
- Promote the activities of the CFAR throughout the broader LA community in collaboration with the Administrative Core through the use of social media platforms.

AIM 3: : To create infrastructure to conduct Clinical Informatics-supported research with community medical providers in Los Angeles to support analysis of EHR data and to inform best practices that are responsive to patients' and providers' changing needs.

- Provide clinical data extraction and retrieval, guidance on HIPAA-compliant data storage media, as well as data management training and support to community medical providers.
- In collaboration with the Developmental Core and the Centralized Laboratory Support Core, engage community investigators to develop rapid evaluation and pilot projects with CFAR investigators.
- Establish processes to support the submission of R-level proposals based on pilot data.
- By promoting advanced CBPR practices, the CECIC will expand and transform how HIV research is conducted in Los Angeles and globally. We will foster a new generation of partnerships between ESI and URM investigators, and community-based organizations to decrease HIV incidence and improve care outcomes.

CORE-E WILL ACCOMPLISH GOALS BY

- Promoting funding opportunities and support collaborations for submission of competitive CBPR proposals
- Convene a yearly Summer Institute in CBPR and Clinical Informatics
- Provide ongoing technical assistance in CBPR and Clinical Informatics
- Establish new collaborations and research opportunities with community clinics and medical providers
- Expand the RSVP research registry (with the Clinical Science Core)
- Develop a local and a global community advisory board (CAB), and
- Provide Clinical Informatics services to community clinics and medical providers in Los Angeles (LA).

CPPR SUMMER INSTITUTE

- Hosted an all-day in person and virtual community partnered participatory research summer institute for UCLA & CDU investigators, affiliates, providers, clinicians, community members & partners, students, and faculty.
- Second annual conference Fall 2024




THE UCLA-CDU CENTER FOR AIDS RESEARCH
COMMUNITY ENGAGEMENT & CLINICAL INFORMATICS CORE
PRESENTS

1ST ANNUAL CPPR SUMMER INSTITUTE

**REGISTER
TODAY!**



DATE & PLACE:
AUGUST 22, 2023
8:00AM-3:00PM
CHARLES R. DREW UNIVERSITY OF MEDICINE & SCIENCE
1731 E. 120TH ST.
LOS ANGELES, CA 90059
KECK AUDITORIUM
CONTINENTAL BREAKFAST AND LUNCH WILL BE SERVED!
CAN'T ATTEND IN PERSON?
SELECT THE ZOOM OPTION WHEN YOU REGISTER!
You can RSVP HERE:
<https://forms.office.com/r/GA7TKNrMwb> OR use the QR code.

Objective: To provide a broad overview of Community Partnered Participatory Research (CPPR) and Clinical Informatics to UCLA & CDU Investigators, Affiliates, Providers, Clinicians, Community Members & Partners, Students, and Faculty.

Confirmed Speakers
Dr. Roberto Vargas, Senior Special Assistant to the President Sylvia Drew-Ivie, Professor Cynthia Davis, Dr. Nina Harawa, Community Faculty Member Charles McWells, Dr. Laura Bogart, Dr. Homero del Pino, Dr. Lola Ogunyemi, APLA Health Clinical Director David Lee, Drew Cares Associate Director Leon Maulsby, Drew CARES Clinical Supervisor Shellye Jones, and the UCLA-CDU CFAR Community Advisory Board

This conference is supported by the UCLA-CDU Center for AIDS Research (P30 A1152501).



E4 CFAR CAB CONFERENCE

- **Educate** - To provide medical updates regarding HIV/AIDS Care and Prevention, Community Advisory Board best practices, and current and past research studies.
- **Engage** - To provide networking opportunities for potential study participants, researchers, and community stakeholders around HIV/AIDS Care and Prevention best practices.
- **Empower** - To leverage resources and opportunities for active recruitment of potential study participants, focus group participants, and CAB members.
- **Elevate** - To better understand the barriers associated with bringing underserved community members, researchers, potential study participants, focus group participants, CAB members, and stakeholders together to advance HIV/AIDS research in a meaningful way.

E4: Educate Engage Empower Elevate

A Los Angeles County
HIV Care/Prevention & Research
Consumer Advisory Board (CAB)
Member Conference

MY VOICE MATTERS IN RESEARCH!

REGISTER NOW
February 26, 2024
Time: 9:30 am - 3:00 pm
(Continental Breakfast: 8:30 am)

Location: Magic Johnson
Recreation Center
905 El Segundo Blvd.
Los Angeles, CA 90059

DA CAB

UCLA CDU CFAR
CENTER FOR AIDS RESEARCH

My Voice Matters In Research!

Edúcate Comprométete Empoderate Elévate

Conferencia de Miembros de Consejo Asesor del Consumidor (CAB) del Condado de Los Angeles Sobre la Atención/Prevención e Investigación del VIH

MI VOS ES IMPORTANTE EN LOS ENSAYOS CLÍNICOS!

REGÍSTRATE AHORA
26 de Febrero de 2024

Ubicación: Centro Recreativo Magic Johnson
905 El Segundo Blvd.
Los Angeles, CA 90059

DA CAB

UCLA CDU CFAR
CENTER FOR AIDS RESEARCH

Para mas informacion, contacta

My Voice Matters In Research!

UCLA CDU CFAR
CENTER FOR AIDS RESEARCH

THE CLARION CALL “NOTHING
ABOUT US WITHOUT US” !!!



Clinical
Science Core



UCLA-CDU CFAR Clinical Science Core

- Mission:

- To support the translation of preliminary data and ideas into clinical and behavioral studies that advance HIV science and lead to interventions with quantifiable impact on the HIV epidemic. The Core aims to achieve this by reducing barriers to the development and implementation of studies. Both domestic and global research initiatives are supported.

- Specific Aims:

- To provide support and training to investigators in the regulatory approval and implementation aspects of biomedical, behavioral, and basic translational studies in HIV
- To facilitate clinical and translational research in HIV by increasing access to research participants and generating new scientific and community collaboration



Kara Chew, MD, MS
Core Director

Core Faculty and Staff



Stephanie Buchbinder, MPH
Core Manager



Risa Hoffman, MD, MPH
Core Faculty



Ian Holloway, PhD, LCSW
Core Faculty



Aleen Khodabakhshian, MD
Core Clinical Coordinator



Ste'von Afemata
Core Laboratory Coordinator



Kevin Pizarro
Outreach Coordinator

Core Services: Support for Developing and Implementing Studies

- **Regulatory Submissions**
 - Assistance/guidance preparing IRB initial submissions, amendments, continuing reviews, and post approval reports
 - Guidance on Institutional Biosafety Committee (IBC) and clinicaltrials.gov submissions
- **Grant/Proposal Support**
 - Assistance with study design and proposal development
 - Identification of collaborators/resources for the proposed work
 - Provision of letters of support
- **Study Implementation**
 - Consultation on protocol readiness, identification of investigator needs and linkage to resources including statistical, data management, laboratory, and regulatory/monitoring support
 - Recruitment support

Core Services: Linkage to Research Populations – Recruitment and Biospecimens

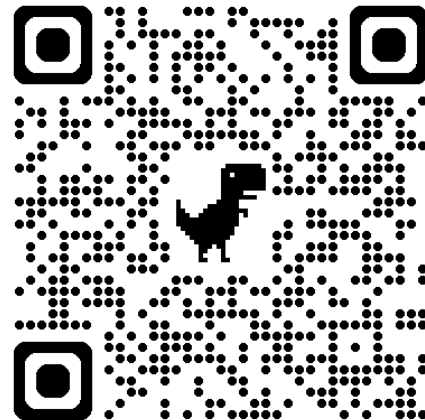
- **Research Study Volunteer Project (RSVP)**
 - Diverse registry of >700 volunteers with and without HIV interested in participating in HIV-related studies
 - Investigators can request use of RSVP to recruit participants for IRB-approved studies
 - Grant applications supported by demonstrating feasibility of accessing the target study population through RSVP (LOS)
- **Samples to Aid Researchers To Upend HIV (START UP)**
 - Registry of volunteers with HIV interested in donating blood for HIV-related studies
 - Investigators can request blood samples (whole blood, plasma, serum, or PBMCs) – on demand blood collection (max 50 mL per visit) for specific research projects
- **Consultation on proposals** using data and sample repositories for NIH-funded cohorts of people with and without HIV (such as MACS/WIHS CCS, ACTG, HPTN, VACS, mSTUDY, IMPAACT, ACSR, and others)

Educational Programming

- **Clinical Discovery Seminar series**
 - Quarterly seminars to introduce researchers to new science conducted by peers, HIV networks, and available data and samples, to foster new proposals and collaborations
- **Training Workshops**
 - Biannual training workshops on regulatory, implementation, and other essential aspects of conducting and disseminating research involving human participants
 - New Implementation Science training series to begin in May 2024

Core Contact Information

- Core email address: cfarclinicalcore@mednet.ucla.edu
- Visit our website: <https://cfar.ucla-cdu.org/cores/clinical-science-core/>



Centralized
Laboratory
Support Core



UCLA CDU CFAR Centralized Laboratory Support Core

The Core provides supports for researchers to carry out virologic, immunologic, and microbiome/genomics studies.

Specific Aims:

1. Provide comprehensive laboratory services to assess HIV-1 infection and immune responses.
2. Provide expertise in the design, implementation, and analysis of studies examining HIV-1 infection.
3. Support clinical HIV-1 research through CAP/CLIA-certified laboratory services.
4. Provide training in relevant laboratory techniques to clients.

Core Laboratory Leadership and Staff

- Core Director: Dr. Dong Sung An, M.D., Ph.D
- Core Faculty: Jennifer Fulcher, M.D., Ph.D
- Lab Manager: Art Catapang

Core Material Services

The UCLA CLS (Virology) Core can provide labs with:

- Whole blood samples
- Peripheral Blood mononuclear cells (PBMCs) isolated from whole blood (fresh or frozen)
- Subset cell isolation (ex. monocytes)

All samples are acquired from donors in collaboration with the UCLA Blood and Platelet Center

Core Technical Assay Services

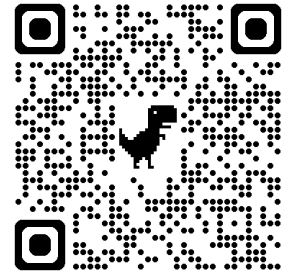
- ddPCR (droplet digital) assay
 - Biorad QX200 ddPCR system
 - Applications: viral and cellular RNA and DNA quantifications
- HIV-1 P24 antigen ELISA
- Provide technical support for researchers implement core technologies in respective research goals

Services Offered by Request

- Virology Services
- Immunology and Mucosal Services
- Microbiome and 'Omics Services
- CAP/CLIA-certified Laboratory Services
- Access to core instrumentation/laboratory bench space

How to Contact Us

- Art's email: acatapang@mednet.ucla.edu
- Art's phone: (310)206-8597
- Location
Biomedical Sciences Research Building, Room 162
615 Charles E. Young Drive South
- Website: <https://cfar.ucla-cdu.org/cores/centralized-laboratory-support-core/>
- PBMC Ordering form: <https://forms.gle/SVqmvvxdYVhrd1Up8>



Developmental
Core



Aim 1: Organize activities that support faculty interactions and mentorship

Aim 2: Coordinate and support faculty recruitment to UCLA and CDU

Aim 3: Administer a pilot grant funding program

Aim 4: Fundraising efforts to supplement the activities of the above aims

SPECIFIC AIMS

THE TEAM



Risa Hoffman, MD, MPH
Co-Director



Omolola Ogunyemi, PhD
Co-Director



Kathie G. Ferbas, PhD
Managing Director,
Scientific



Jina Lee
Managing Director,
Operations



Raphael Landovitz, MD
Mentoring Faculty



Nina Harawa, PhD
Mentoring Faculty

BIWEEKLY MULTI-DISCIPLINARY HIV SEMINAR SERIES

Showcases two presentations by researchers investigating HIV/AIDS and other viruses: typically trainees or ESI describing their work in progress.

- Every other Tuesday, in-person at UCLA BSRB 154, from 9am to 10am.



VIROLOGY SEMINAR SERIES BSRB 154

It is impossible for researchers to keep abreast of the work being done by colleagues in a variety of disciplines. This is the UCLA CHIPTS and the UCLA AIDS Institute's response by creating a seminar series of presentations made by researchers working in both basic and translational sciences, clinical therapeutics and biomedical prevention. The topics covered include, among many others, host-virus interactions, novel therapeutic vaccines, stem cell research, aging, and viral pathogenesis.

Please note that all information presented during these weekly conferences should be treated as CONFIDENTIAL.

April 2, 2024

9:00AM Jonathan Jih (Zhou Lab)
"The Incredible Bulk: Human cytomegalovirus tegument architectures uncovered by AI-empowered cryoEM."

9:30AM Maria Daskou (Arumugaswami Lab)
"Povassan virus neurotropism and disease mechanism"

HIV GRAND ROUNDS, in collaboration with UCLA CHIPTS

Monthly seminar series features renowned researchers, clinicians, community members, policy makers, and leaders in HIV prevention and treatment sharing important developments in HIV-related research.

- 3rd Tuesday of every month, from 11am to 12pm



HIV GRAND ROUNDS

"Bridging the Gap: Cell and Gene Therapies for Latent HIV Infection and Other Low-Antigen Diseases"

Over the past decade, Chimeric Antigen Receptor (CAR) T cells have emerged as a potent therapy for B cell malignancies. Applying analogous antigen-specific approaches for diseases such as antiretroviral therapy (ART)-suppressed HIV-1 infection poses additional challenges. This presentation will outline our efforts to deliver suppressional antigens and enhance the activity of anti-HIV cell and gene therapies.

Event Information
This is a hybrid presentation

In-person Details:
Venue: CHS 13-105 (UCLA)
A Light Lunch will be provided with RSVP

IN-PERSON REGISTRATION

Virtual Information
Zoom Meeting ID: 9601 2286 2286
You can also call in using:
• Phone: +1 659 900 0833
• Meeting ID: 961 0788 0800

VIRTUAL REGISTRATION

Christopher W. Peterson, PhD
Assistant Professor of Gene Therapy and Immunology
Assistant Professor of Cell and Gene Therapy
Assistant Professor of HIV/AIDS Research
Assistant Professor of Infectious Disease
Assistant Professor of Microbiology, Immunology and Pathology
Assistant Professor of Molecular, Cellular and Developmental Biology
Assistant Professor of Pediatrics
Assistant Professor of Pathology and Laboratory Medicine
Assistant Professor of Radiation Oncology
Assistant Professor of Surgery
Assistant Professor of Translational Medicine
Assistant Professor of Virology
Assistant Professor of Biomedical Engineering
Assistant Professor of Biomedical Physics
Assistant Professor of Biomedical Sciences
Assistant Professor of Biomedical Systems
Assistant Professor of Biomedical Technology
Assistant Professor of Biomedical Engineering
Assistant Professor of Biomedical Physics
Assistant Professor of Biomedical Sciences
Assistant Professor of Biomedical Systems
Assistant Professor of Biomedical Technology

FEB 13, 2024
11:00am - 12:00pm PST

Scan to register for the HIV Grand Rounds lecture

CHIPTS
Questions/Comments: Rina.Lee-Chi_Grand@mednet.ucla.edu

PEER MENTORING POD MEETINGS FOR EARLY-STAGE INVESTIGATORS (ESIs)

Quarterly gatherings to cultivate a tight-knit community of peer support for ESIs while providing exposure to faculty members from diverse backgrounds.

- Discussion topics: manuscript preparation, navigating collaborations, fund management, and faculty advancement strategies.



ONGOING
EVENTS

RECRUITMENT AND RETENTION ASSISTANCE

Support for recruiting new faculty (supplemental start-up funding) or retaining existing faculty.

- In 2023, Dr. Laura D'Anna was recruited to CDU
 - Focus on health disparities, social discrimination, and health outcomes



TRAVEL GRANTS

DOMESTIC TRAVEL (\$1,000 max/award)

For UCLA-CDU CFAR award recipients with a currently active project or a project that has ended within the last 12 months – for travel to present at scientific meetings or other meetings focused on developing new collaborations

INTERNATIONAL TRAVEL (\$3,000 max/award)

Funds travel to initiate new international HIV research projects.

- In 2023, Dr. Charisse Ahmed, PhD, RN (Postdoc, National Clinician Scholars Program) was awarded for *Rise Up! Program in Zambia*, for travel to Zambia to support a collaborative study and foster meaningful partnerships on the ground.

ALSO, available from Core A:

- Core Vouchers
- Rapid Response Awards
- Incubator Awards

FUNDING
OPPORTUNITIES

FOR
TIME
SENSITIVE
ACTIVITIES

ACCEPTED
ON A
ROLLING BASIS

PILOT PROJECTS

Fund HIV-related research with an emphasis on supporting ESIs and established investigators who are new to HIV research (\$60,000 per grant for one year); Encourage collaboration and lay the groundwork for future funding opportunities.

FY22 ROUND –8 applications awarded

17 applications received, and applicants were a mix of ESIs (13) and non-HIV (4) researchers.

- Variety of epidemiologic, clinical-translational, and basic science research projects

FY23 ROUND –8 applications awarded

12 applications received, applicants were a mix of ESIs (8) and non-HIV researchers (14)

NEW!

FY24 NEW –**Multi-PI and Cross-Institutional HIV Research Pilot Projects: UCLA and CDU**

- Maximum request per application: \$80,000 Direct Costs
- Each application must include a multi-PI framework and cross-institutional collaboration, with **one** principal investigator from UCLA and **one** from CDU, with at least one designated as an Early-Stage Investigator (ESI) or a seasoned researcher new to HIV research.
- Timeline:
 - 05/15/24: LOI Due
 - 05/22/24: Notification of LOIs approved for full submission
 - 07/26/24: Applications due
 - 10/01/24: Earliest start date

ALSO, available from Core A:

- Wilbert C. Jordan Community Faculty Award
- CFAR Administrative Supplements



QUESTIONS?

Contact Us:

Risa Hoffman rhoffman@mednet.ucla.edu

Lola Ogunyemi lolaogunyemi@cdrewu.edu

Raphael Landovitz rlandovitz@mednet.ucla.edu

Nina Harawa nharawa@mednet.ucla.edu

Jina Lee jinalee@mednet.ucla.edu

Kathie Ferbas kferbas@mednet.ucla.edu



Administrative
Core





SPECIFIC AIMS

Aim 1: Provide scientific leadership and governance based on strategic planning to support the breadth of research and clinical care at UCLA and CDU

Aim 2: Provide HIV specific biostatistical consultation and support services to CFAR members

Aim 3: Provide a central source of up-to-date information and prompt assistance for Core Directors, Executive Committee Members, CFAR researchers, UCLA and CDU Faculty and community partners

Aim 4: Provide effective and timely evaluation of CFAR activities and report progress to UCLA and CDU Institutional Officials, the Leadership Group, the Executive Committee, the External Advisory Board and NIH participating Institutes and Centers



The Team



Judith Currier, MD
Co-Director, UCLA



LaShonda Spencer, MD
Co-Director, CDU



Jerome Zack, PhD
Co-Director, UCLA



Kathie G. Ferbas, PhD
Managing Director,
Scientific, UCLA



Jina Lee
Managing Director,
Operations, UCLA



Rina Lee-Cha
Administrative



Andrea Jones
Administrator, CDU



Rachel Reiss
Communications
Specialist

EXECUTIVE COMMITTEE

Dong Sung An, MD, PhD
UCLA, Professor of Nursing

Debika Bhattacharya, MD
UCLA & VA, Assoc. Clin. Professor,
Infectious Diseases

Eric Daar, MD
Harbor-UCLA, Professor and Chief,
HIV Medicine

Lynnea Garbutt
CAB Representative

Nina Harawa, PhD
UCLA, Professor, GIM & HSR
CDU, Professor, Medicine

Raphael Landovitz, MD, MSc
UCLA, Professor, Infectious Diseases

Lejeune Lockett, PhD
CDU, Assist. Professor,
Health & Life Sciences

Matthew Mimiaga, PhD
UCLA, Professor, Epidemiology

Steve Shoptaw, PhD
UCLA, Professor, Family
Medicine, CHIPTS Director

Jay Vadgama, PhD
UCLA, Professor, Internal Med.
CDU, Professor

Otto Yang, MD
UCLA, Professor, Infectious Diseases

FUNDING OPPORTUNITIES

FOR TIME SENSITIVE ACTIVITIES (ACCEPTED ON A ROLLING BASIS)

VOUCHERS FOR CFAR AND CFAR-AFFILIATED SERVICES (max \$2,500/request)

Reserved for Early-Stage Investigators with limited or no funding.

- Vouchers for Biostatistical Support from the UCLA CTSI Biostatistics, Epidemiology and Research Design (BERD) program and the UCLA Department of Medicine Statistics Core (DOMStat)
- Vouchers for UCLA Flow Cytometry Core services to utilize services in support of pilot data experiments. For use of specialized equipment in the Flow Cytometry Core (i.e. Helios CyTOF Mass Cytometer or a need for sorting of HIV infected cells).
- Vouchers for CFAR Core C (Centralized Laboratory Support) services (including instrumentation) for obtaining pilot data for grant submission.

RAPID RESPONSE AWARDS (max \$5,000)

To fund projects that require a rapid response and addresses emerging areas of HIV research. The purpose of these awards is to support collaborations and innovative ideas, including feasibility studies and gathering preliminary data, to meet the rapidly changing needs in the field.

INCUBATOR AWARDS (max \$10,000)

For any faculty member to hold meetings, think tanks, conferences, seminars, workshops, etc. designed to forge new collaborations in innovative arenas relevant to HIV disease.

ALSO, available from Core B:

- Recruitment/Retention Assistance
- Travel Grants

FUNDING OPPORTUNITIES

WILBERT C. JORDAN COMMUNITY FACULTY AWARD FOR HIV RESEARCH (\$10,000 over a 2-year period)

For CDU faculty and collaborators of faculty working in the field of HIV. To support HIV researchers, promote HIV science, foster networking, and support capacity building in HIV research by providing timely and crucial resources.

CFAR ADMINISTRATIVE SUPPLEMENT AWARDS (\$100,000 to \$200,000 for 1-2 years)

The NIH CFAR Program Office annually announces calls for NIH CFAR Administrative Supplements and/or Special Supplements, providing supplemental funding for specific HIV research areas across all CFAR sites.

ALSO, available from Core B:

- Pilot Projects

QUESTIONS?

CONTACT US



Judith S. Currier, MD, MSc
Core Co-Director
jscurrier@mednet.ucla.edu

LaShonda Spencer, MD
Core Co-Director
lashondaspencer@cdrewu.edu

Jerome A. Zack, PhD, MS
Core Co-Director
jzack@ucla.edu

Kathie Ferbas, PhD
Managing Director, Scientific
kferbas@mednet.ucla.edu

Andrea S. Jones
Administrator
andrea.jones@cdrewu.edu

Jina Lee
Managing Director, Operations
jinalee@mednet.ucla.edu

Rina Lee-Cha
Administrative Assistant
rlee@mednet.ucla.edu

Rachel Reiss
Communications Specialist
rlreiss@mednet.ucla.edu

Email:
UCLA-CDU.CFAR@mednet.ucla.edu
Website: www.cfar.ucla-cdu.org/

General Q&A

