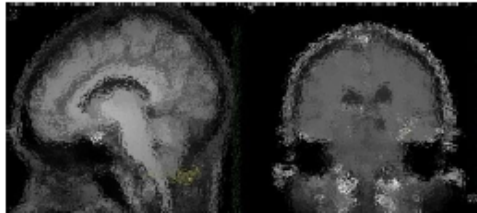


MRI Study for HIV+ patients



ARE YOU:

- 20 to 65 years of age?
- diagnosed as HIV+ ?
- for at least the last 12 months, consistently presenting with plasma HIV RNA levels <200 copies/mL?
- on a stable antiretroviral regimen?

If so, you may be eligible to participate in this MRI study.



If you choose to volunteer, you will partake in a 75-minute brain MRI/MRS without contrast dye and a ~2.5 hour neuropsychological assessment.

There is no fee to participate in the study. The non-diagnostic MRI/MRS will be paid for by the study. The neuropsychological assessment will be conducted via HIPAA compliant Zoom. For your participation in the study you will receive a \$50 payment for the MRI/MRS and \$50 for the neuropsychological assessment.

Your participation in this study is voluntary and for research purposes only. The benefits to society include an enhanced understanding of the causes and the biochemistry of HIV.

For more information on how to enroll in this study, please contact:

Principal Investigator

Albert Thomas, PhD

AThomas@mednet.ucla.edu

310-206-4191

Co-Investigator

Dr. Eric Daar

EDaar@lundquist.org

310-222-2365

Study Coordinators

Hailey Valles

HValles@mednet.ucla.edu

213-326-4307

This study is a partnership between The Lundquist Institute at Harbor UCLA and UCLA Radiology and is sponsored by the National Institutes of Health (NIH).

